

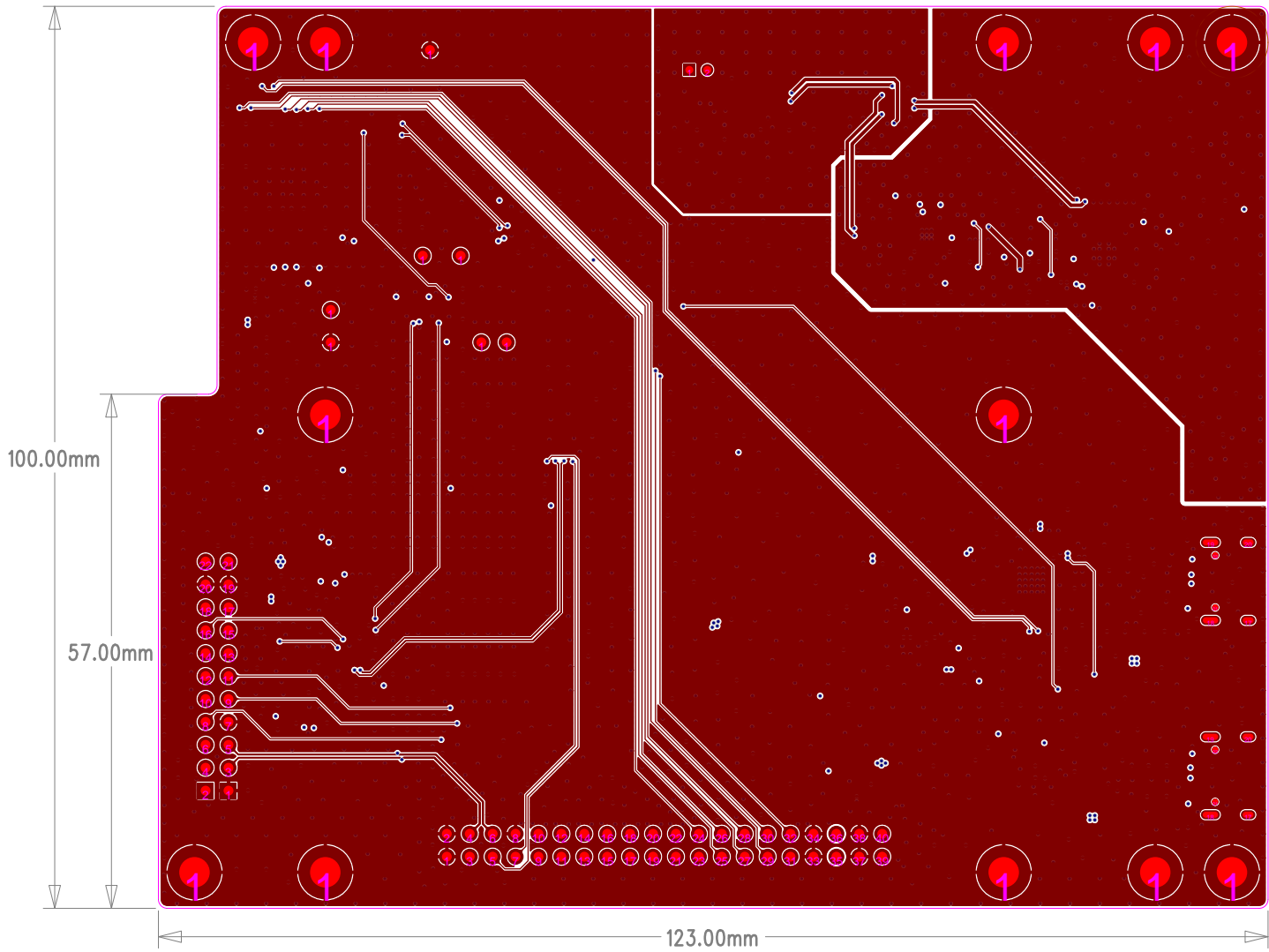
100.00mm

57.00mm

123.00mm

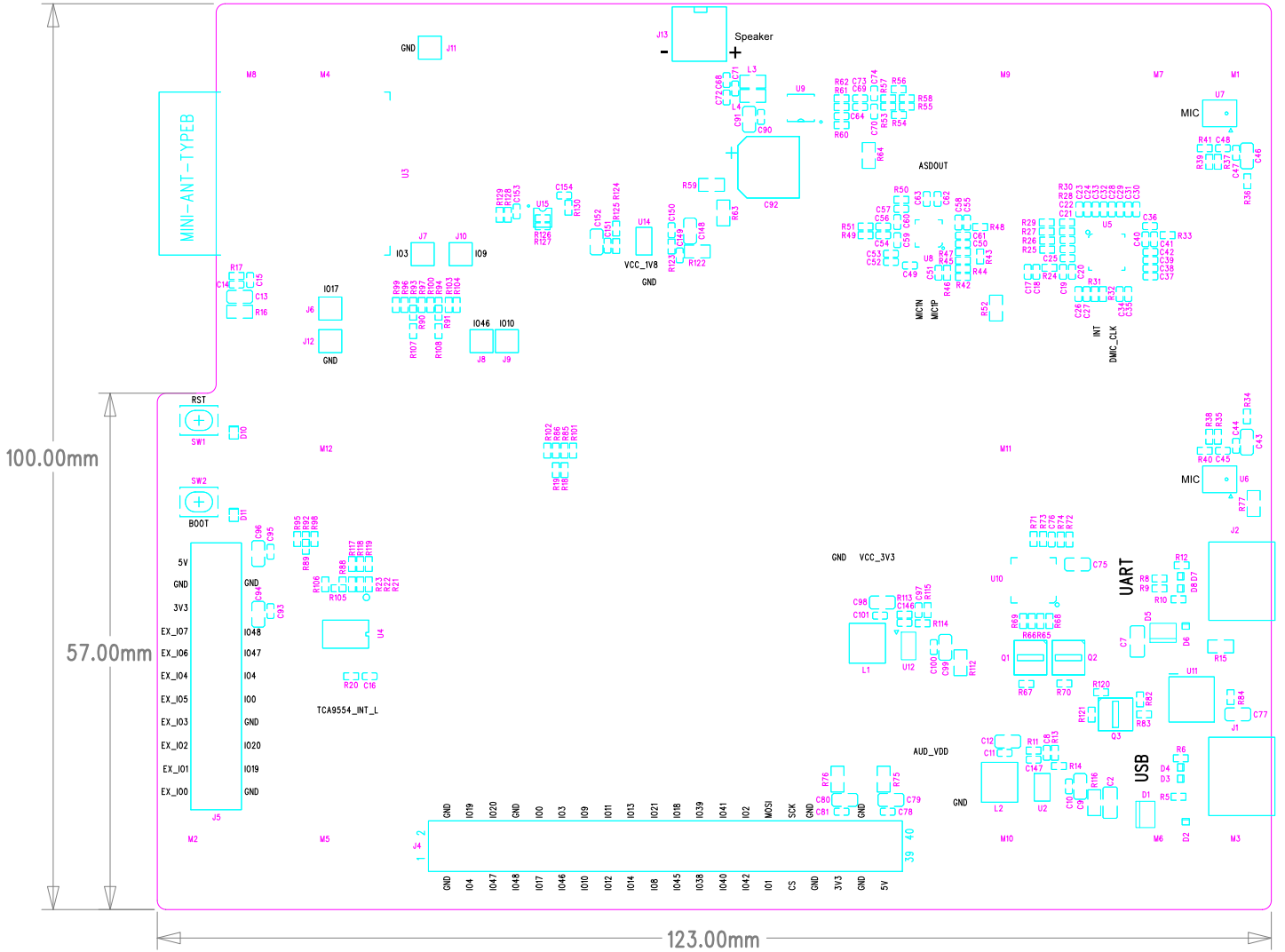
EXPRESS SYSTEM			
DATE	VERSION	DESCRIPTION	BY
2023-10-27	1.0	Initial Design	J. Chen
2023-11-05	1.1	Design Update	J. Chen
2023-11-15	1.2	Final Design	J. Chen
2023-11-20	1.3	Production Release	J. Chen

Symbol	Value	Footprint	Quantity
U1	IC12345	IC12345	1
U2	IC67890	IC67890	1
U3	IC11111	IC11111	1
U4	IC22222	IC22222	1
U5	IC33333	IC33333	1
U6	IC44444	IC44444	1
U7	IC55555	IC55555	1
U8	IC66666	IC66666	1
U9	IC77777	IC77777	1
U10	IC88888	IC88888	1
U11	IC99999	IC99999	1
U12	IC00000	IC00000	1
U13	IC10101	IC10101	1
U14	IC20202	IC20202	1
U15	IC30303	IC30303	1
U16	IC40404	IC40404	1
U17	IC50505	IC50505	1
U18	IC60606	IC60606	1
U19	IC70707	IC70707	1
U20	IC80808	IC80808	1
U21	IC90909	IC90909	1
U22	IC01010	IC01010	1
U23	IC10101	IC10101	1
U24	IC20202	IC20202	1
U25	IC30303	IC30303	1
U26	IC40404	IC40404	1
U27	IC50505	IC50505	1
U28	IC60606	IC60606	1
U29	IC70707	IC70707	1
U30	IC80808	IC80808	1
U31	IC90909	IC90909	1
U32	IC01010	IC01010	1
U33	IC10101	IC10101	1
U34	IC20202	IC20202	1
U35	IC30303	IC30303	1
U36	IC40404	IC40404	1
U37	IC50505	IC50505	1
U38	IC60606	IC60606	1
U39	IC70707	IC70707	1
U40	IC80808	IC80808	1
U41	IC90909	IC90909	1
U42	IC01010	IC01010	1
U43	IC10101	IC10101	1
U44	IC20202	IC20202	1
U45	IC30303	IC30303	1
U46	IC40404	IC40404	1
U47	IC50505	IC50505	1
U48	IC60606	IC60606	1
U49	IC70707	IC70707	1
U50	IC80808	IC80808	1
U51	IC90909	IC90909	1
U52	IC01010	IC01010	1
U53	IC10101	IC10101	1
U54	IC20202	IC20202	1
U55	IC30303	IC30303	1
U56	IC40404	IC40404	1
U57	IC50505	IC50505	1
U58	IC60606	IC60606	1
U59	IC70707	IC70707	1
U60	IC80808	IC80808	1
U61	IC90909	IC90909	1
U62	IC01010	IC01010	1
U63	IC10101	IC10101	1
U64	IC20202	IC20202	1
U65	IC30303	IC30303	1
U66	IC40404	IC40404	1
U67	IC50505	IC50505	1
U68	IC60606	IC60606	1
U69	IC70707	IC70707	1
U70	IC80808	IC80808	1
U71	IC90909	IC90909	1
U72	IC01010	IC01010	1
U73	IC10101	IC10101	1
U74	IC20202	IC20202	1
U75	IC30303	IC30303	1
U76	IC40404	IC40404	1
U77	IC50505	IC50505	1
U78	IC60606	IC60606	1
U79	IC70707	IC70707	1
U80	IC80808	IC80808	1
U81	IC90909	IC90909	1
U82	IC01010	IC01010	1
U83	IC10101	IC10101	1
U84	IC20202	IC20202	1
U85	IC30303	IC30303	1
U86	IC40404	IC40404	1
U87	IC50505	IC50505	1
U88	IC60606	IC60606	1
U89	IC70707	IC70707	1
U90	IC80808	IC80808	1
U91	IC90909	IC90909	1
U92	IC01010	IC01010	1
U93	IC10101	IC10101	1
U94	IC20202	IC20202	1
U95	IC30303	IC30303	1
U96	IC40404	IC40404	1
U97	IC50505	IC50505	1
U98	IC60606	IC60606	1
U99	IC70707	IC70707	1
U100	IC80808	IC80808	1



ESPRESSO SYSTEMS			
FILE	ESPRESSO_1.0.0_BOARD.PCB	DATE	2012-11-15
TYPE	PCB	USER	ESPRESSO
DATE	2012-11-15	VERSION	1.0
DESIGNER	ESPRESSO	CHECKER	ESPRESSO
APPROVED	ESPRESSO	DATE	2012-11-15

NAME	VALUE	UNIT	DESCRIPTION
1	100.00	mm	Dimension
2	57.00	mm	Dimension
3	123.00	mm	Dimension



ESPRESSO SYSTEMS	
File Name	ESPRESSO_SYSTEMS
File Path	C:\Users\user\Documents\ESPRESSO_SYSTEMS
File Type	PCB Layout
File Size	10.5 MB
File Date	2023-10-27 10:00:00
File Version	1.0
File Author	user
File Description	ESPRESSO_SYSTEMS

Item No.	Item Name	Quantity	Unit
1	RES	10	PC
2	CAP	20	PC
3	IND	5	PC
4	CON	10	PC
5	IC	1	PC
6	CONN	1	PC
7	MEM	1	PC
8	SW	2	PC
9	ANTENNA	1	PC
10	SPK	1	PC
11	MIC	2	PC
12	ASSOUT	1	PC
13	MCIN	1	PC
14	MCIP	1	PC
15	INT	1	PC
16	DMIC_CLK	1	PC
17	UART	1	PC
18	USB	1	PC

ESP32-S3-LCD-EV-Board-MB_V1.5



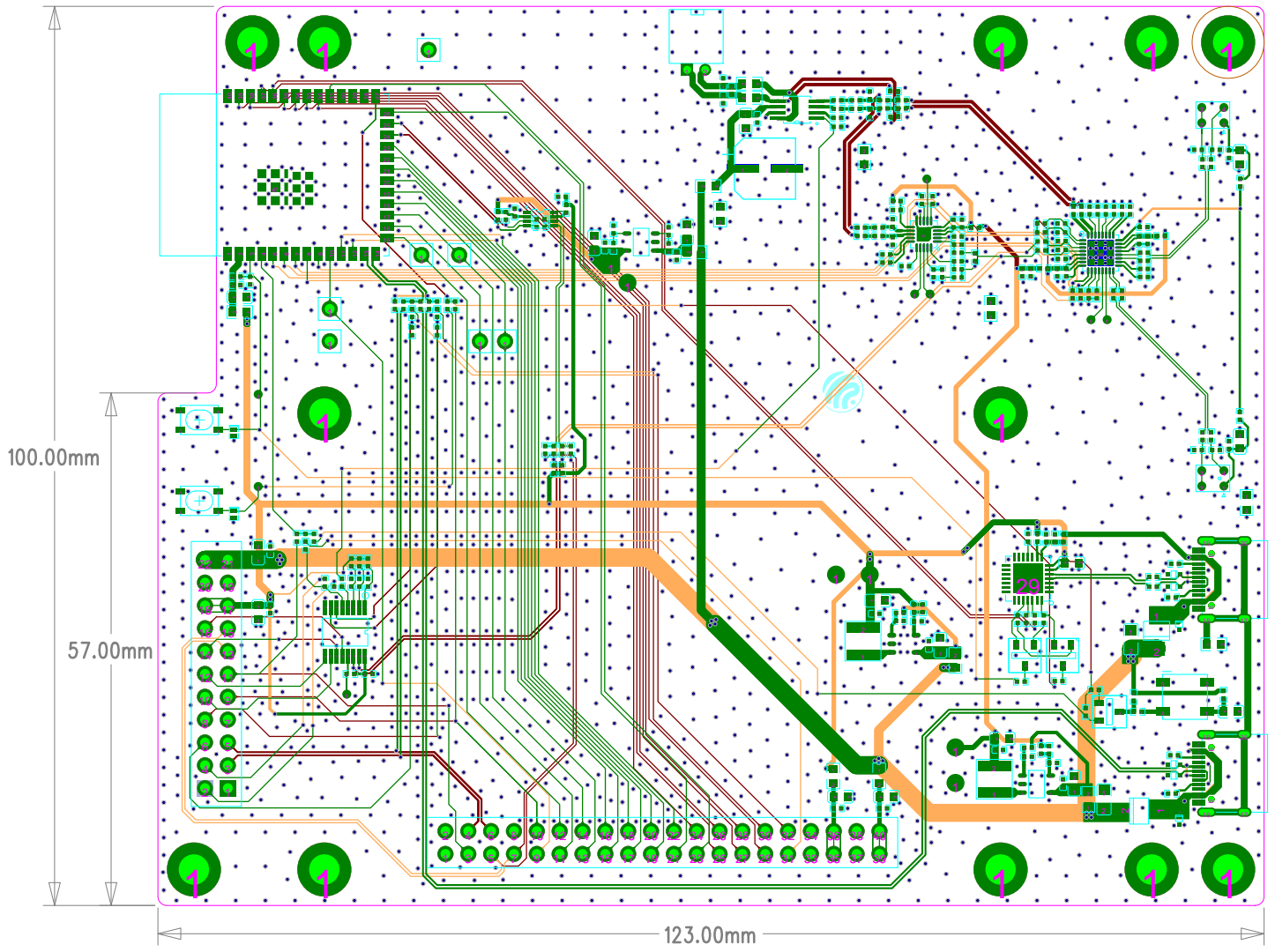
mm00.521

mm00.72

mm00.00f

REV	DATE	DESCRIPTION	BY	CHK
1	2024-07-10	Initial Release	W. Wang	W. Wang
2	2024-07-10	Update BOM	W. Wang	W. Wang
3	2024-07-10	Update PCB	W. Wang	W. Wang
4	2024-07-10	Update Schematic	W. Wang	W. Wang
5	2024-07-10	Update Assembly	W. Wang	W. Wang
6	2024-07-10	Update Test Plan	W. Wang	W. Wang
7	2024-07-10	Update User Manual	W. Wang	W. Wang
8	2024-07-10	Update Packaging	W. Wang	W. Wang
9	2024-07-10	Update Compliance	W. Wang	W. Wang
10	2024-07-10	Update Final Review	W. Wang	W. Wang

DESIGNER'S SIGNATURE	
W. Wang	2024-07-10
CHECKER'S SIGNATURE	
W. Wang	2024-07-10
APPROVER'S SIGNATURE	
W. Wang	2024-07-10



COPRESS SYSTEMS	
Proj:	...
Doc:	...
Author:	...
Date:	...
Scale:	1:1
Sheet:	1 of 1
Revision:	...
Created:	...
Modified:	...
Printed:	...

Layer	Color	Width	Drill	Mil
1	Green	0.15	0.1	4
2	Orange	0.15	0.1	4
3	Red	0.15	0.1	4
4	Green	0.15	0.1	4
5	Orange	0.15	0.1	4
6	Red	0.15	0.1	4
7	Green	0.15	0.1	4
8	Orange	0.15	0.1	4
9	Red	0.15	0.1	4
10	Green	0.15	0.1	4
11	Orange	0.15	0.1	4
12	Red	0.15	0.1	4
13	Green	0.15	0.1	4
14	Orange	0.15	0.1	4
15	Red	0.15	0.1	4
16	Green	0.15	0.1	4
17	Orange	0.15	0.1	4
18	Red	0.15	0.1	4
19	Green	0.15	0.1	4
20	Orange	0.15	0.1	4
21	Red	0.15	0.1	4
22	Green	0.15	0.1	4
23	Orange	0.15	0.1	4
24	Red	0.15	0.1	4
25	Green	0.15	0.1	4
26	Orange	0.15	0.1	4
27	Red	0.15	0.1	4
28	Green	0.15	0.1	4
29	Orange	0.15	0.1	4
30	Red	0.15	0.1	4
31	Green	0.15	0.1	4
32	Orange	0.15	0.1	4
33	Red	0.15	0.1	4
34	Green	0.15	0.1	4
35	Orange	0.15	0.1	4
36	Red	0.15	0.1	4
37	Green	0.15	0.1	4
38	Orange	0.15	0.1	4
39	Red	0.15	0.1	4
40	Green	0.15	0.1	4
41	Orange	0.15	0.1	4
42	Red	0.15	0.1	4
43	Green	0.15	0.1	4
44	Orange	0.15	0.1	4
45	Red	0.15	0.1	4
46	Green	0.15	0.1	4
47	Orange	0.15	0.1	4
48	Red	0.15	0.1	4
49	Green	0.15	0.1	4
50	Orange	0.15	0.1	4
51	Red	0.15	0.1	4
52	Green	0.15	0.1	4
53	Orange	0.15	0.1	4
54	Red	0.15	0.1	4
55	Green	0.15	0.1	4
56	Orange	0.15	0.1	4
57	Red	0.15	0.1	4
58	Green	0.15	0.1	4
59	Orange	0.15	0.1	4
60	Red	0.15	0.1	4
61	Green	0.15	0.1	4
62	Orange	0.15	0.1	4
63	Red	0.15	0.1	4
64	Green	0.15	0.1	4
65	Orange	0.15	0.1	4
66	Red	0.15	0.1	4
67	Green	0.15	0.1	4
68	Orange	0.15	0.1	4
69	Red	0.15	0.1	4
70	Green	0.15	0.1	4
71	Orange	0.15	0.1	4
72	Red	0.15	0.1	4
73	Green	0.15	0.1	4
74	Orange	0.15	0.1	4
75	Red	0.15	0.1	4
76	Green	0.15	0.1	4
77	Orange	0.15	0.1	4
78	Red	0.15	0.1	4
79	Green	0.15	0.1	4
80	Orange	0.15	0.1	4
81	Red	0.15	0.1	4
82	Green	0.15	0.1	4
83	Orange	0.15	0.1	4
84	Red	0.15	0.1	4
85	Green	0.15	0.1	4
86	Orange	0.15	0.1	4
87	Red	0.15	0.1	4
88	Green	0.15	0.1	4
89	Orange	0.15	0.1	4
90	Red	0.15	0.1	4
91	Green	0.15	0.1	4
92	Orange	0.15	0.1	4
93	Red	0.15	0.1	4
94	Green	0.15	0.1	4
95	Orange	0.15	0.1	4
96	Red	0.15	0.1	4
97	Green	0.15	0.1	4
98	Orange	0.15	0.1	4
99	Red	0.15	0.1	4
100	Green	0.15	0.1	4