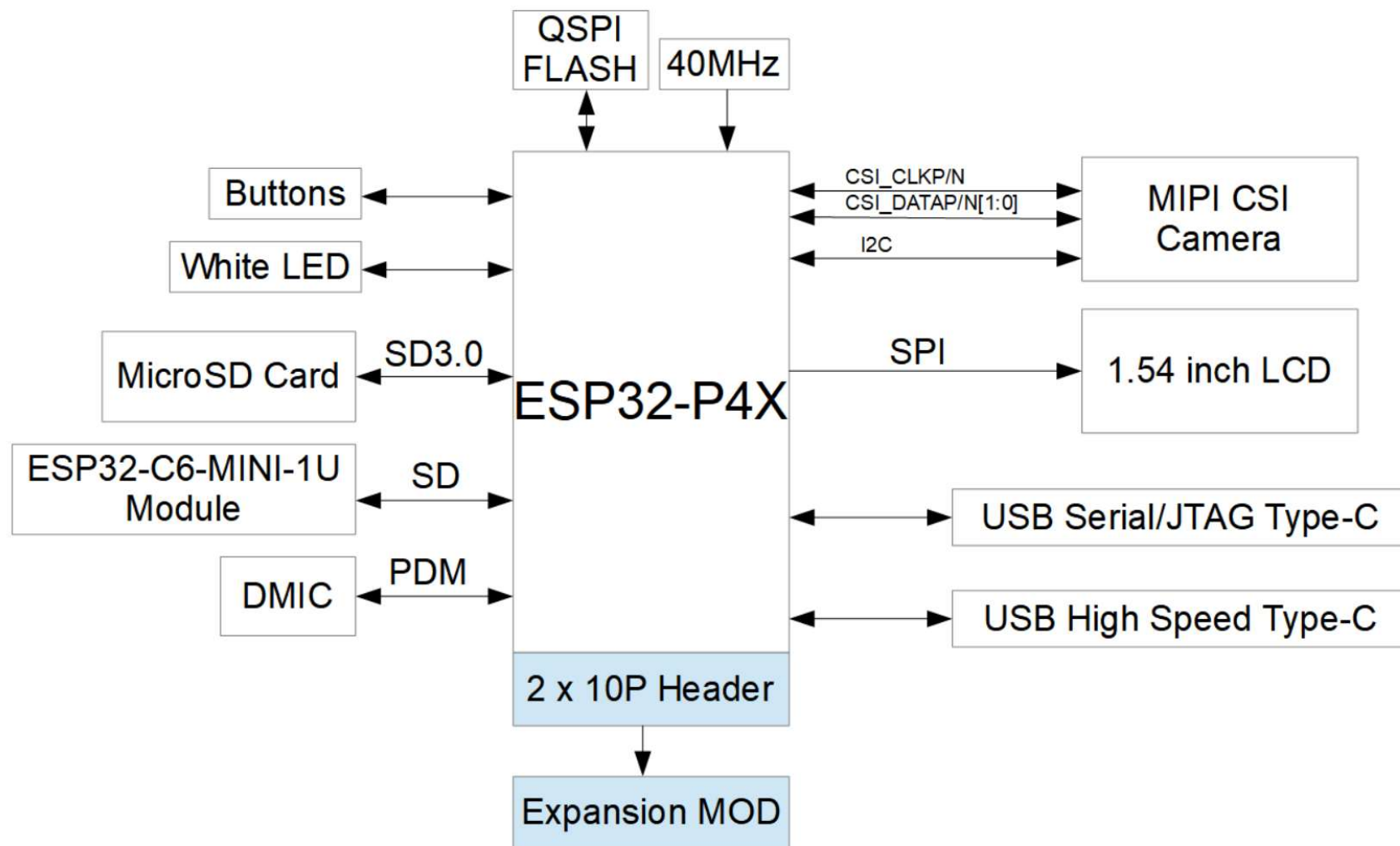
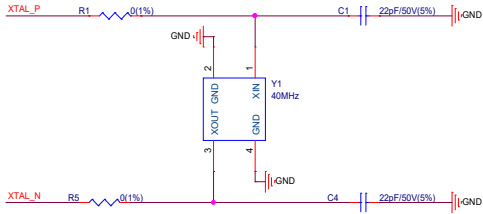


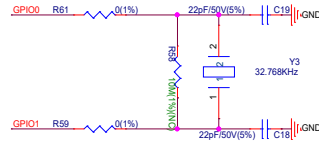
Design Block:



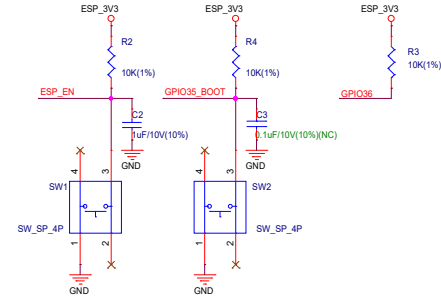
40MHz XTAL:



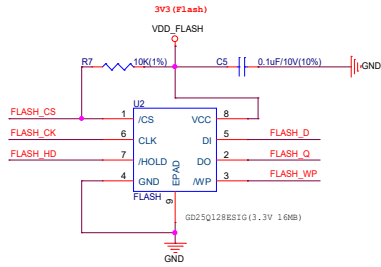
RTC XTAL:



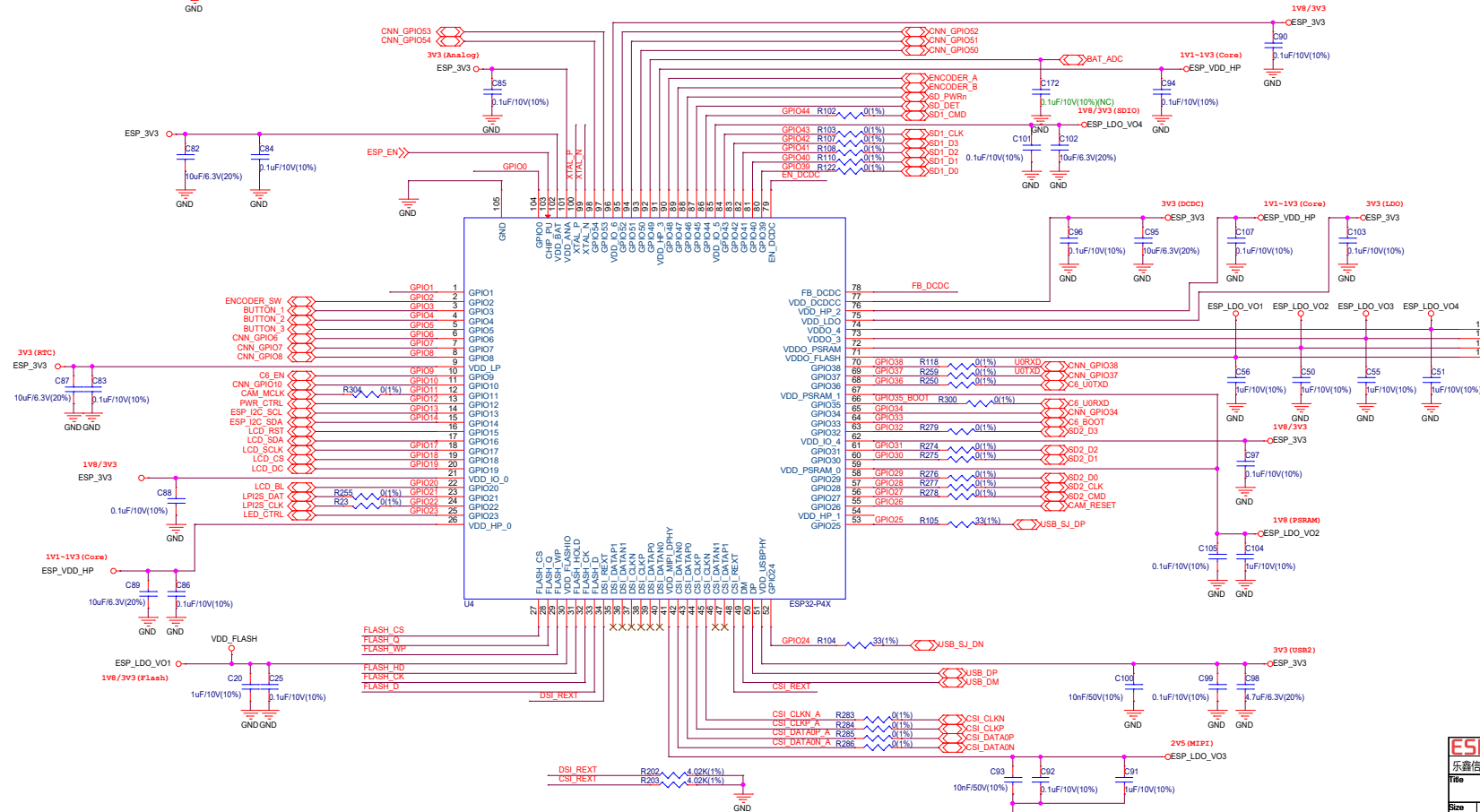
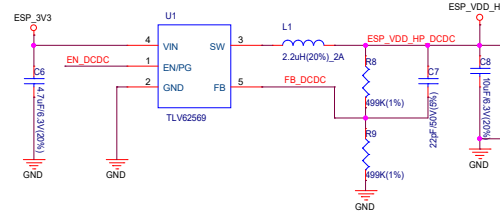
BUTTONS:



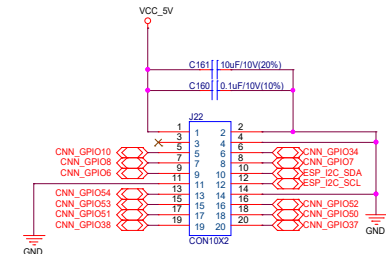
FLASH:



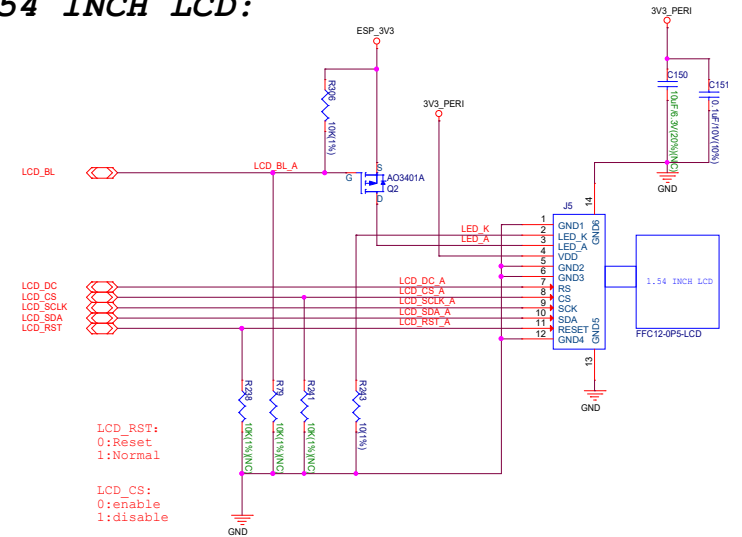
VDD_HP DCDC:



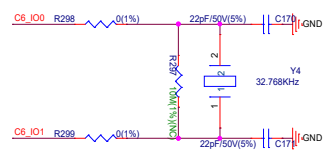
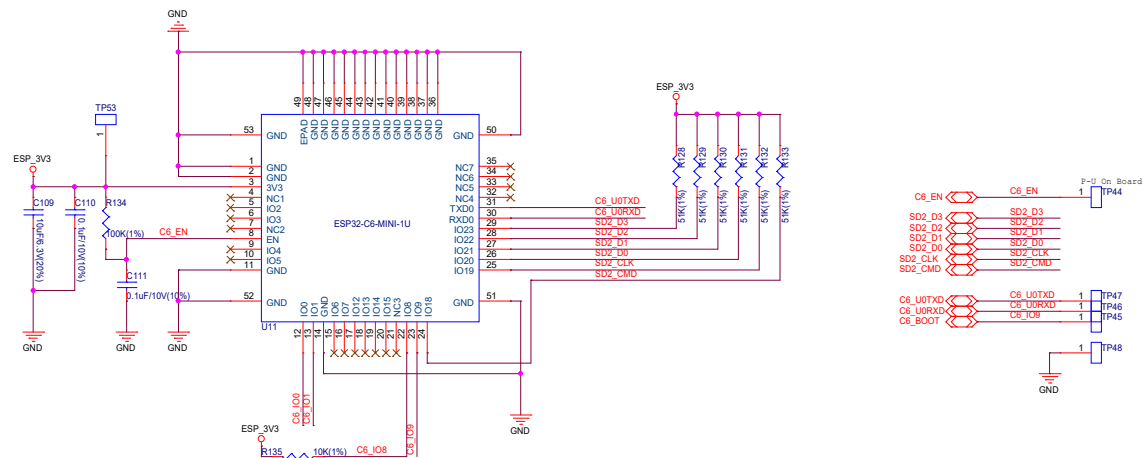
DMIC



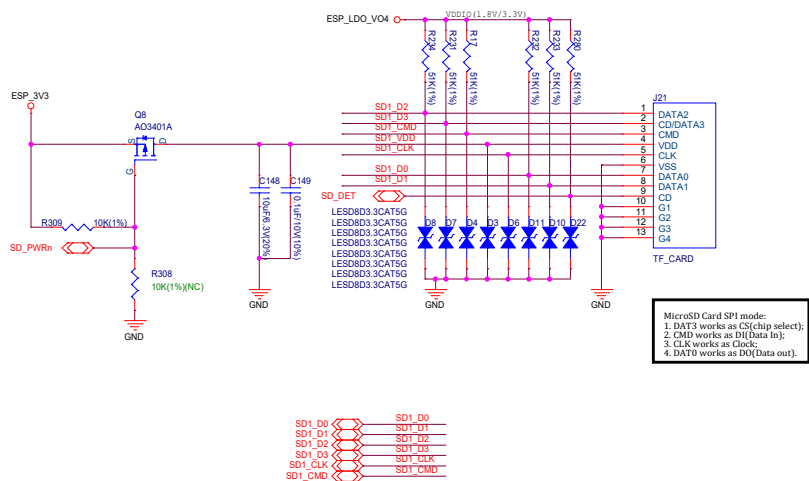
1.54 INCH LCD:



WiFi & BT Module:

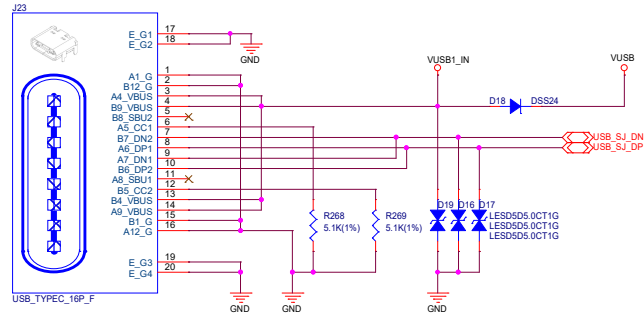


MicroSD Card:

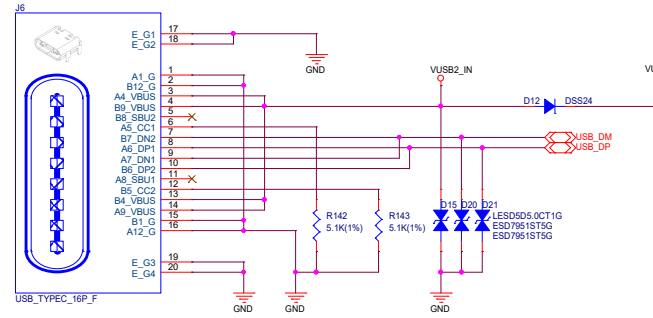


MicroSD Card SPI mode:
1. DAT3 works as CS(chip select);
2. CMD works as DI(data in);
3. CLK works as Clock;
4. DAT0 works as DO(data out).

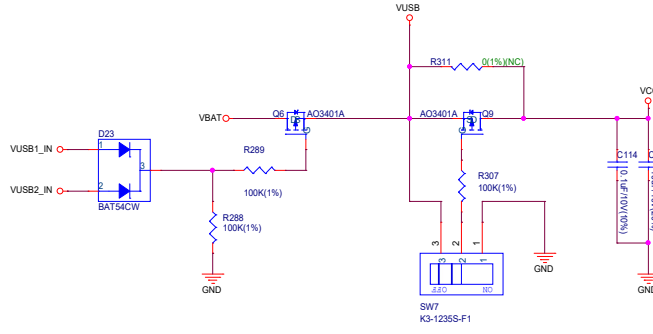
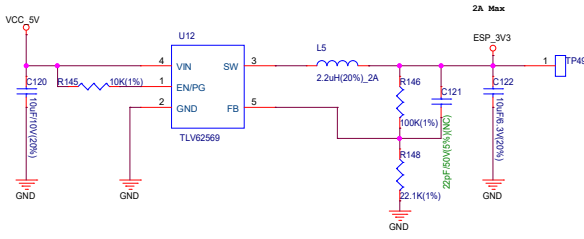
USB Serial/JTAG & Power in:



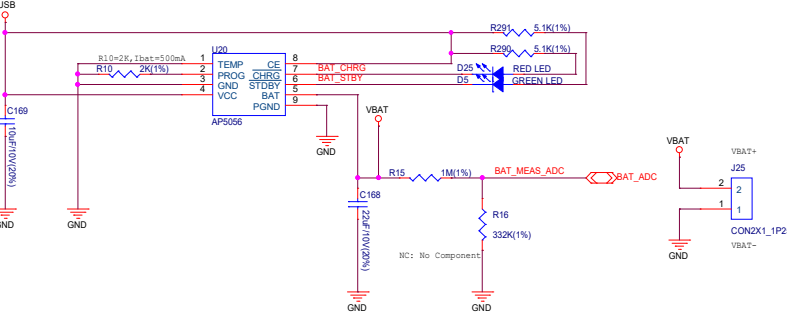
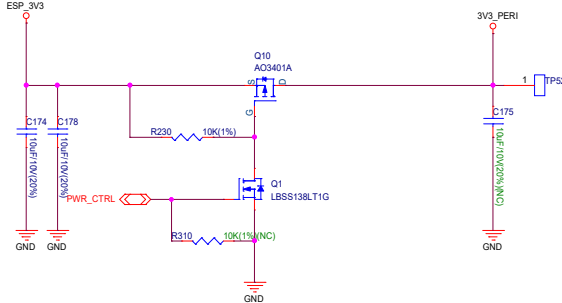
USB HighSpeed & Power in:



3V3 DC-DC For ESP:



3V3_PERI 3.3V



CAM AVDD 3.3V

